

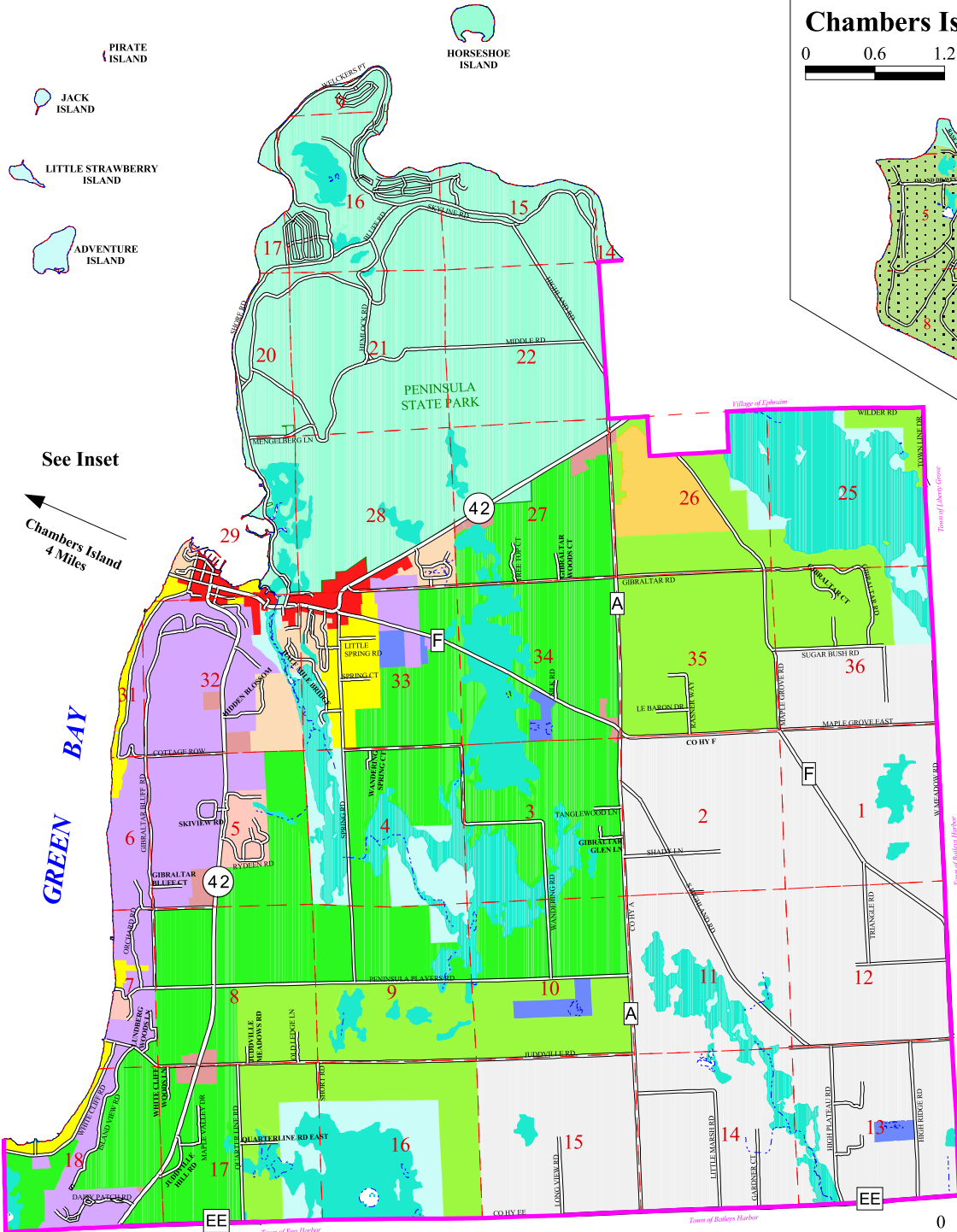
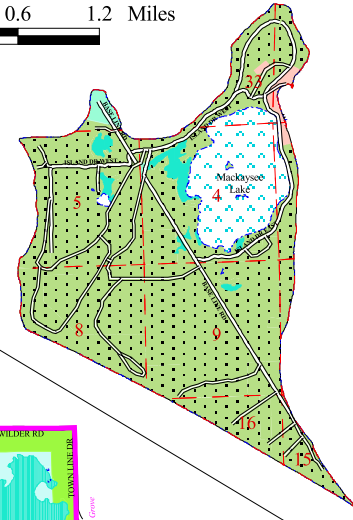
Town of Gibraltar

Door County, Wisconsin

February, 2015

Chambers Island

0 0.6 1.2 Miles



- General Commercial
- Recreational Commercial
- Village Commercial
- Light Industrial
- General Agricultural
- Countryside5
- Heartland - 5
- Heartland - 3.5
- Small Estate Residential
- Neighborhood Residential
- Single Family - 20,000
- Conservation Area
- Natural Area
- Wetland
- Chambers Island

Map Features

- 42 State Highway
- A County Highway
- A ST Local Road
- Lakes and Ponds
- Surface Water Features
- Section Lines
- Town Boundary

This map is neither a legally recorded map nor a survey, and is not intended to be used as one. It is a compilation of records and information used for reference purposes only. Information may have changed since the printing of this map. Please contact Town of Gibraltar or County of Door for updates.

Source: Door County Planning Department, 2014

0 0.6 1.2 Miles



See Inset
Chambers Island
4 Miles

GREEN BAY

PIRATE ISLAND

JACK ISLAND

LITTLE STRAWBERRY ISLAND

ADVENTURE ISLAND

HORSESHOE ISLAND

PENINSULA STATE PARK

Town of Bailey Harbor

Town of Egg Harbor

Town of Ephraim

Town of Liberty Grove

Town of Gibraltar

Town of Gibraltar