

APPROXIMATE TIMEFRAME: MARCH TO EARLY MAY

BLUFF LANE TO SHORE ROAD & SHORE ROAD

- OPEN TO TWO WAY TRAFFIC
- SHOULDER CLOSURES
- LANE SHIFTS
- PARKING LANE CLOSURES
- SIDEWALK CLOSURES
- DAYTIME LANE CLOSURES WITH FLAGGING OPERATIONS

SHORE ROAD TO WINDMILL LANE & HOUSE #3976 TO COUNTY F

- CLOSED TO THRU TRAFFIC
- LOCAL ACCESS ONLY
- SEE STAGE 1 DETOUR

WINDMILL LANE TO HOUSE #3976 & COUNTY F TO YMCA CROSSWALK

- CLOSED TO ALL TRAFFIC
- SEE STAGE 1 DETOUR

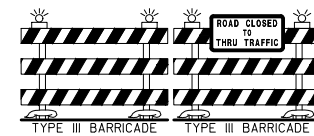
TEMPORARY DRIVEWAYS

- GIBRALTAR SCHOOL USE TEMPORARY ASPHALT DRIVEWAY FROM OLD GIBRALTAR ROAD
- FISH CREEK GRILL USE TEMPORARY GRAVEL DRIVEWAY FROM COUNTY F

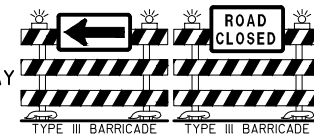
YMCA CROSSWALK TO SISTER BAY (NOT SHOWN)

- OPEN TO TWO WAY TRAFFIC
- SHOULDER CLOSURES
- DAYTIME LANE CLOSURES UNDER FLAGGING OPERATIONS

(A) ROAD CLOSED TO THRU TRAFFIC
LOCAL TRAFFIC ONLY

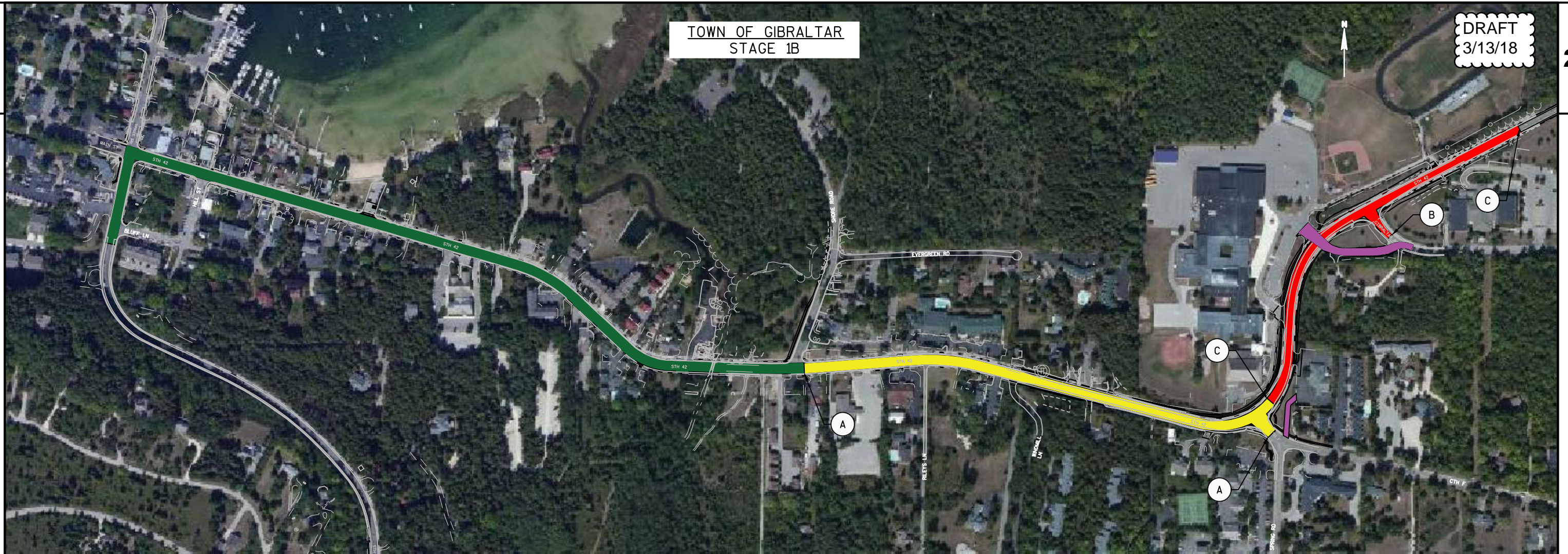


(B) HARD CLOSURE
NO ACCESS
DIVERT TRAFFIC TO TEMP ROADWAY



(C) HARD CLOSURE
NO ACCESS





APPROXIMATE TIMEFRAME: EARLY MAY TO THE FRIDAY PRIOR TO MEMORIAL DAY WEEKEND

BLUFF LANE TO SHORE ROAD

- OPEN TO TWO WAY TRAFFIC
- SHOULDER CLOSURES
- LANE SHIFTS
- PARKING LANE CLOSURES
- SIDEWALK CLOSURES
- DAYTIME LANE CLOSURES WITH FLAGGING OPERATIONS

SHORE ROAD TO COUNTY F

- CLOSED TO THRU TRAFFIC
- LOCAL ACCESS ONLY
- SEE STAGE 1 DETOUR

COUNTY F TO YMCA CROSSWALK

- CLOSED TO ALL TRAFFIC
- SEE STAGE 1 DETOUR

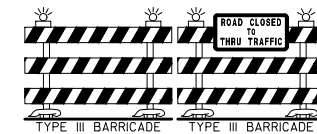
TEMPORARY DRIVEWAYS

- GIBRALTAR SCHOOL USE TEMPORARY ASPHALT DRIVEWAY FROM OLD GIBRALTAR ROAD
- FISH CREEK GRILL USE TEMPORARY GRAVEL DRIVEWAY FROM COUNTY F

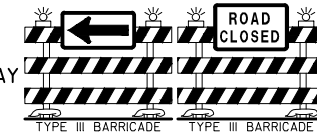
YMCA CROSSWALK TO SISTER BAY (NOT SHOWN)

- OPEN TO TWO WAY TRAFFIC
- SHOULDER CLOSURES
- DAYTIME LANE CLOSURES UNDER FLAGGING OPERATIONS

(A) ROAD CLOSED TO THRU TRAFFIC
LOCAL TRAFFIC ONLY



(B) HARD CLOSURE
NO ACCESS
DIVERT TRAFFIC TO TEMP ROADWAY

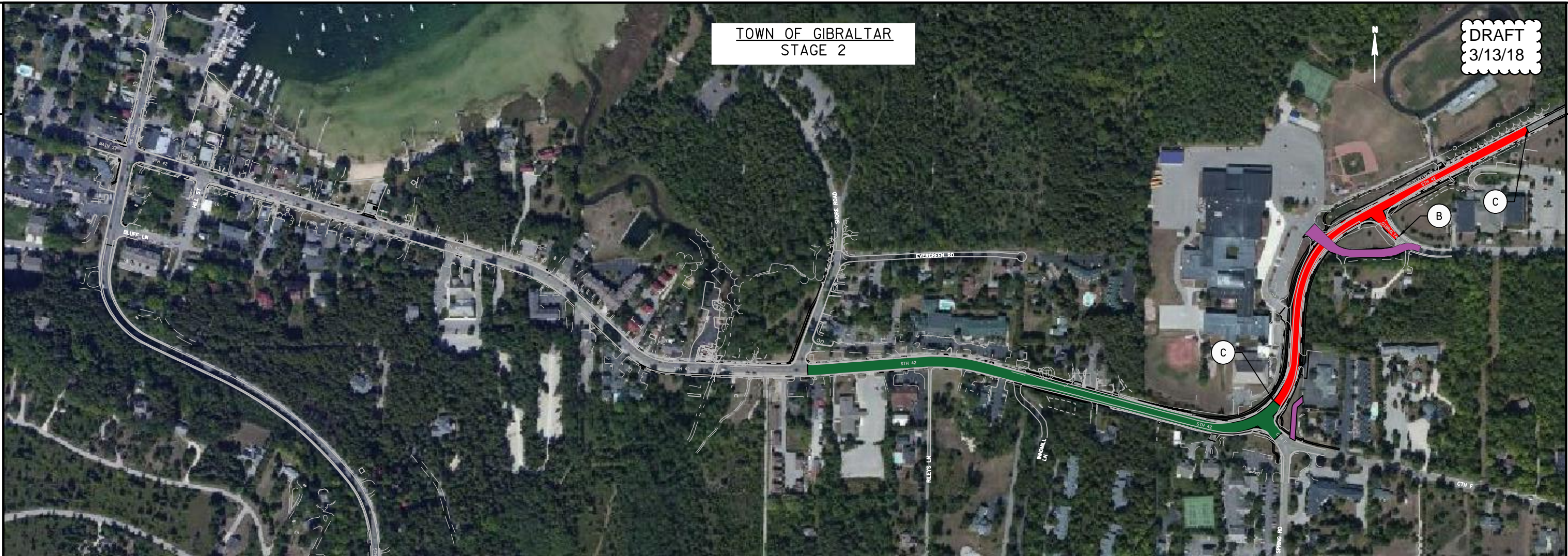


(C) HARD CLOSURE
NO ACCESS



TOWN OF GIBRALTAR
STAGE 2

DRAFT
3/13/18



APPROXIMATE TIMEFRAME: FRIDAY PRIOR TO MEMORIAL DAY WEEKEND TO JUNE 29th
 DETOUR REMOVED AND STH 42 OPEN TO TRAFFIC JUNE 29th
 WORK ON STH 42 TO BE SUSPENDED JUNE 29th-SEPTEMBER 3rd



SHORE ROAD TO COUNTY F

- OPEN TO TWO WAY TRAFFIC
- SHOULDER CLOSURES
- PARKING LANE CLOSURES
- SIDEWALK CLOSURES
- DAYTIME LANE CLOSURES WITH FLAGGING OPERATIONS



COUNTY F TO YMCA CROSSWALK

- CLOSED TO TRAFFIC
- SEE STAGE 2 DETOUR



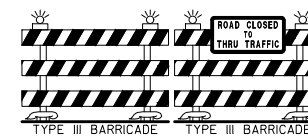
TEMPORARY DRIVEWAYS

- GIBRALTAR SCHOOL USE TEMPORARY ASPHALT DRIVEWAY FROM OLD GIBRALTAR ROAD
- FISH CREEK GRILL USE TEMPORARY GRAVEL DRIVEWAY FROM COUNTY F

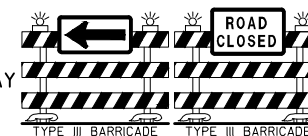
YMCA CROSSWALK TO SISTER BAY (NOT SHOWN)

- OPEN TO TWO WAY TRAFFIC
- SHOULDER CLOSURES
- DAYTIME LANE CLOSURES UNDER FLAGGING OPERATIONS

(A) ROAD CLOSED TO THRU TRAFFIC
LOCAL TRAFFIC ALLOWED ACCESS

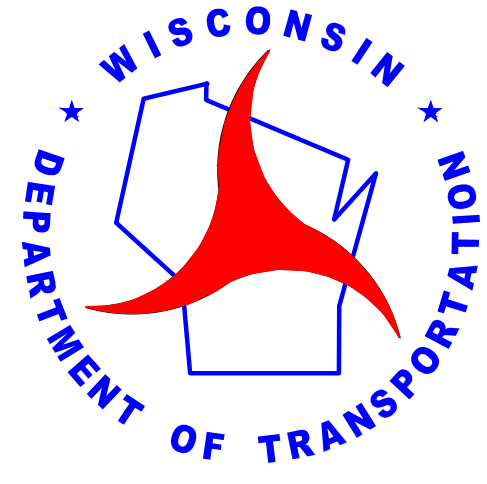


(B) HARD CLOSURE
NO ACCESS ALL TRAFFIC
DIVERT TRAFFIC TO TEMP ROADWAY



(C) HARD CLOSURE
NO ACCESS FOR ALL TRAFFIC





**PROJECT ID 4140-19-71
GIBRALTAR - SISTER BAY
DOOR COUNTY**

DRAFT
3/13/18

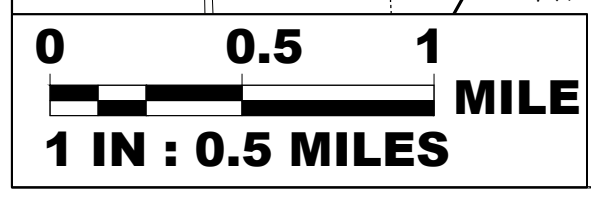
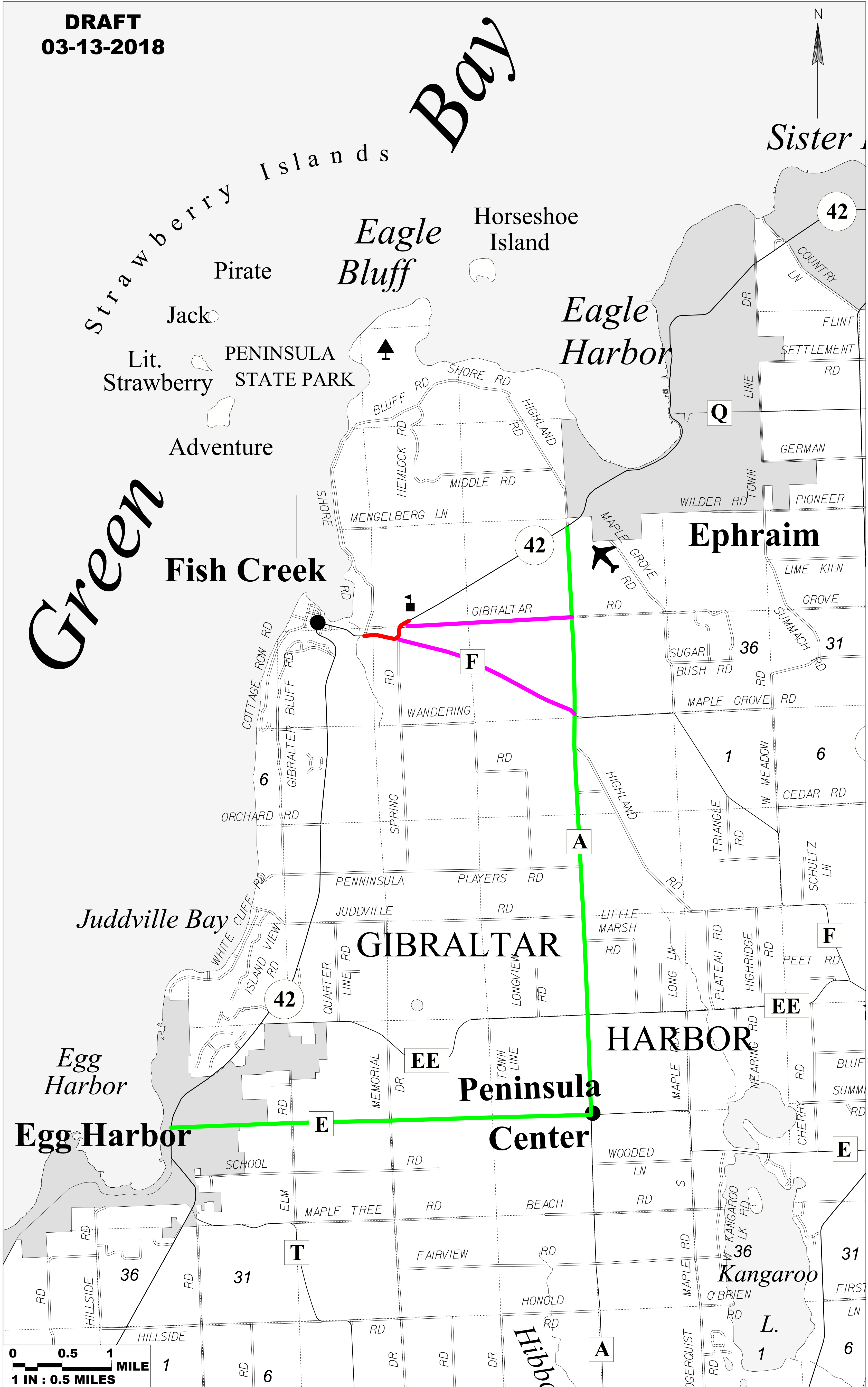
LEGEND

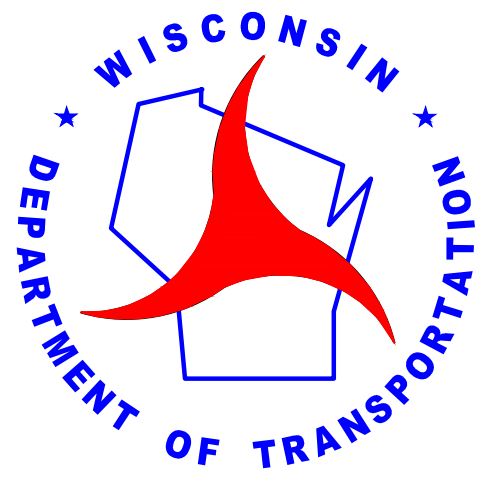
- **DETOUR: COUNTY A AND COUNTY E**
- **LOCAL ACCESS: COUNTY F & GIBRALTAR RD**
- **CLOSED ROAD: WIS 42**

**WIS 42
DETOUR PLAN**

**STAGE 1
SPRING 2019
MARCH - PRIOR TO MEMORIAL DAY**

**DRAFT
03-13-2018**





**PROJECT ID 4140-19-71
GIBRALTAR - SISTER BAY
DOOR COUNTY**

**DRAFT
3/13/18**

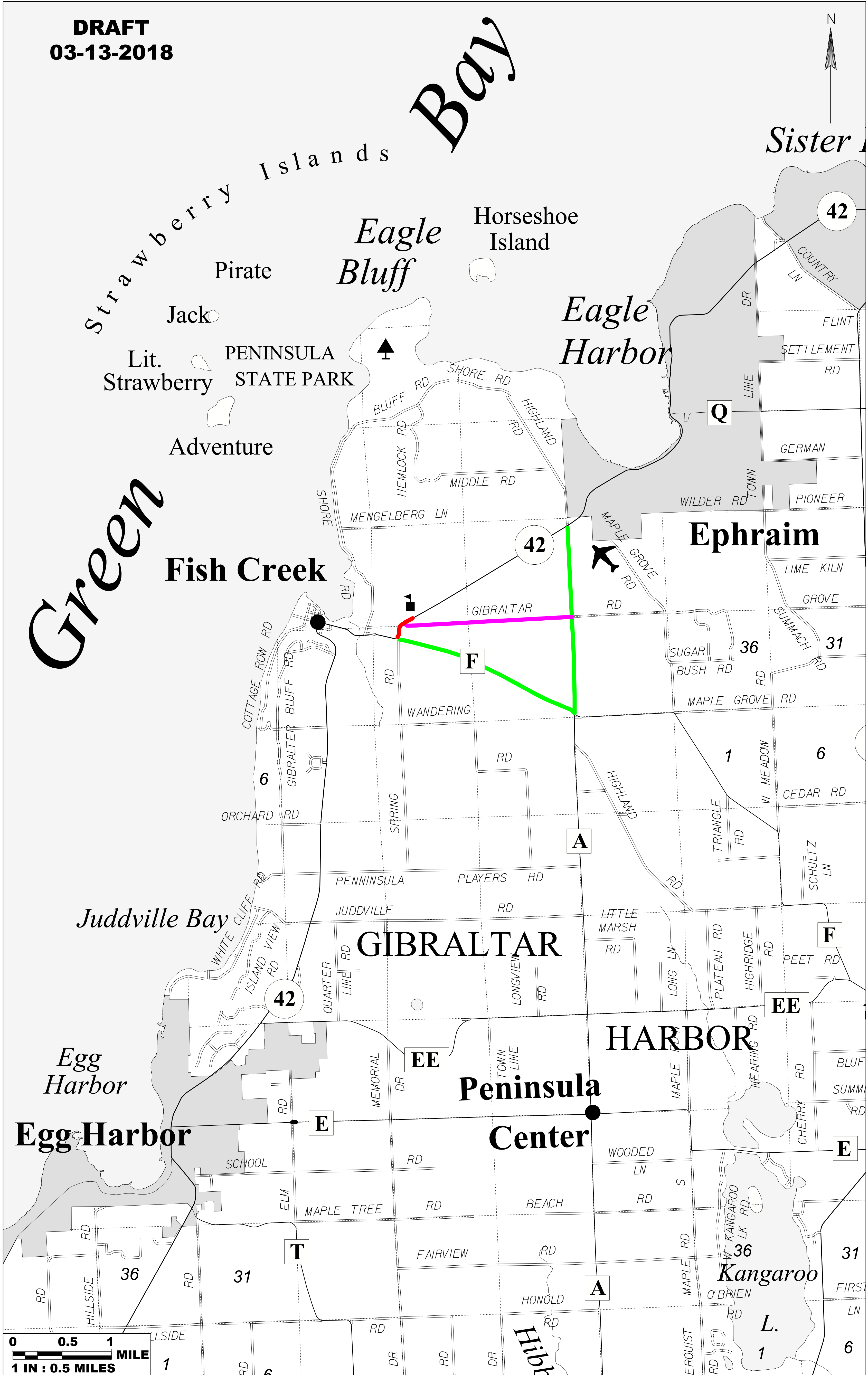
**WIS 42
DETOUR PLAN**

LEGEND

- **DETOUR: COUNTY A AND COUNTY E**
- **LOCAL ACCESS: COUNTY F & GIBRALTAR RD**
- **CLOSED ROAD: WIS 42**

**STAGE 2
SPRING 2019
PRIOR TO MEMORIAL DAY - END JUNE**

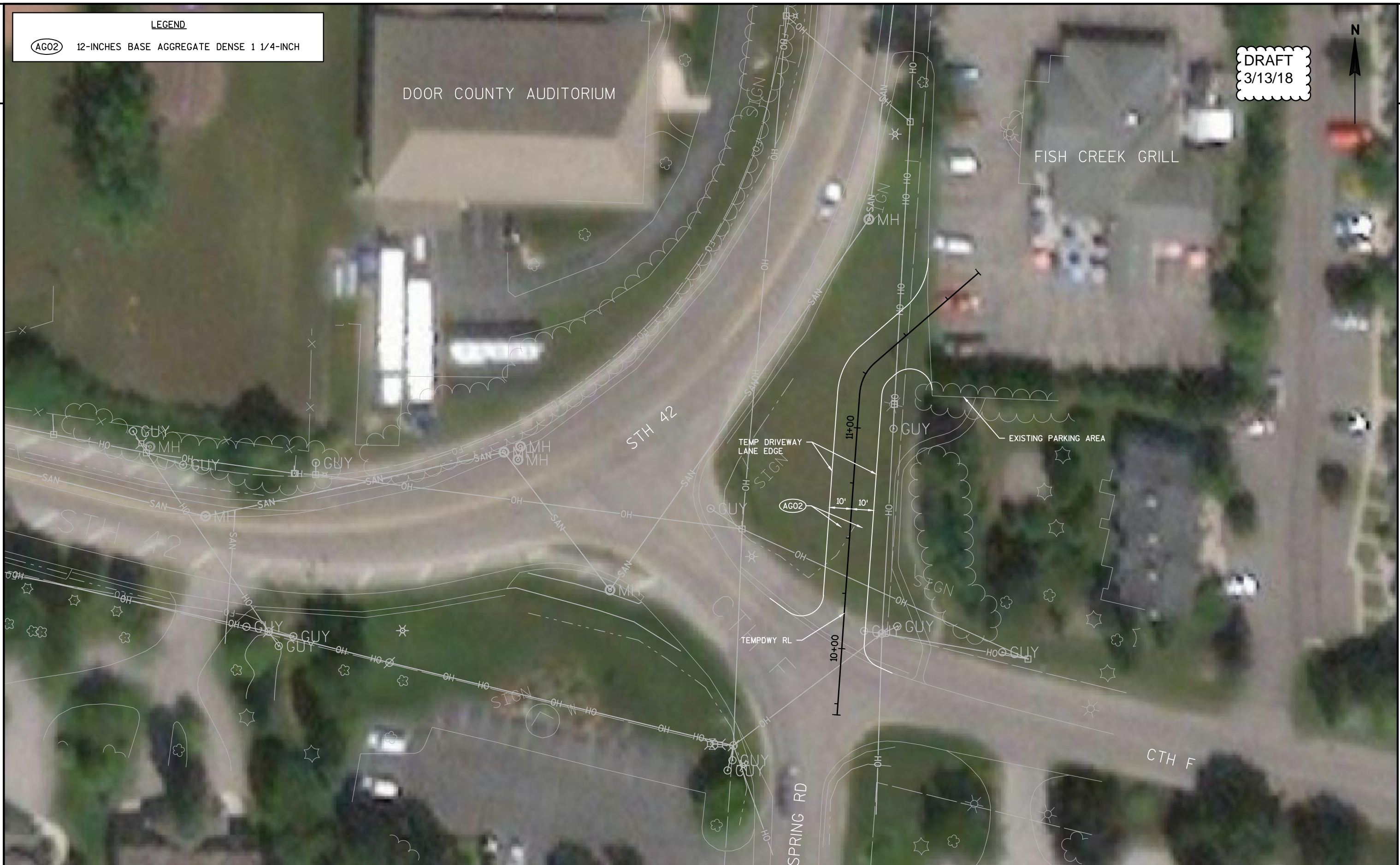
**DRAFT
03-13-2018**



LEGEND

AG02 12-INCHES BASE AGGREGATE DENSE 1 1/4-INCH

DRAFT
3/13/18



PROJECT NO: 4140-19-71

HWY: STH 42

COUNTY: DOOR

STAGE CONSTRUCTION

SHEET

E