

Pleistocene Geology

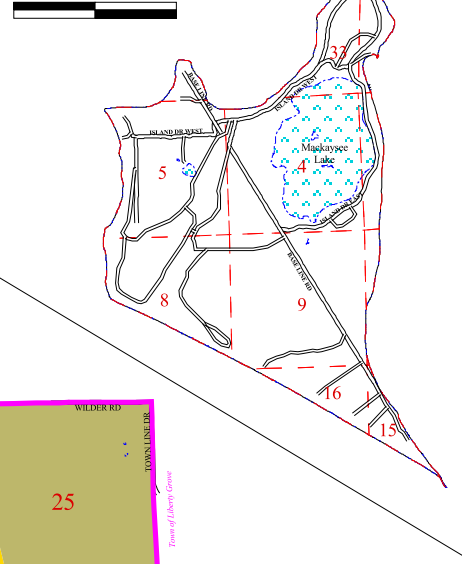
Town of Gibraltar

Door County, Wisconsin





December, 2015

Chambers Island

0 0.6 1.2 Miles







Quaternary Glaciation

-  Lake Deposits
-  Ground Moraine
-  End Moraine
-  Unclassified (islands)

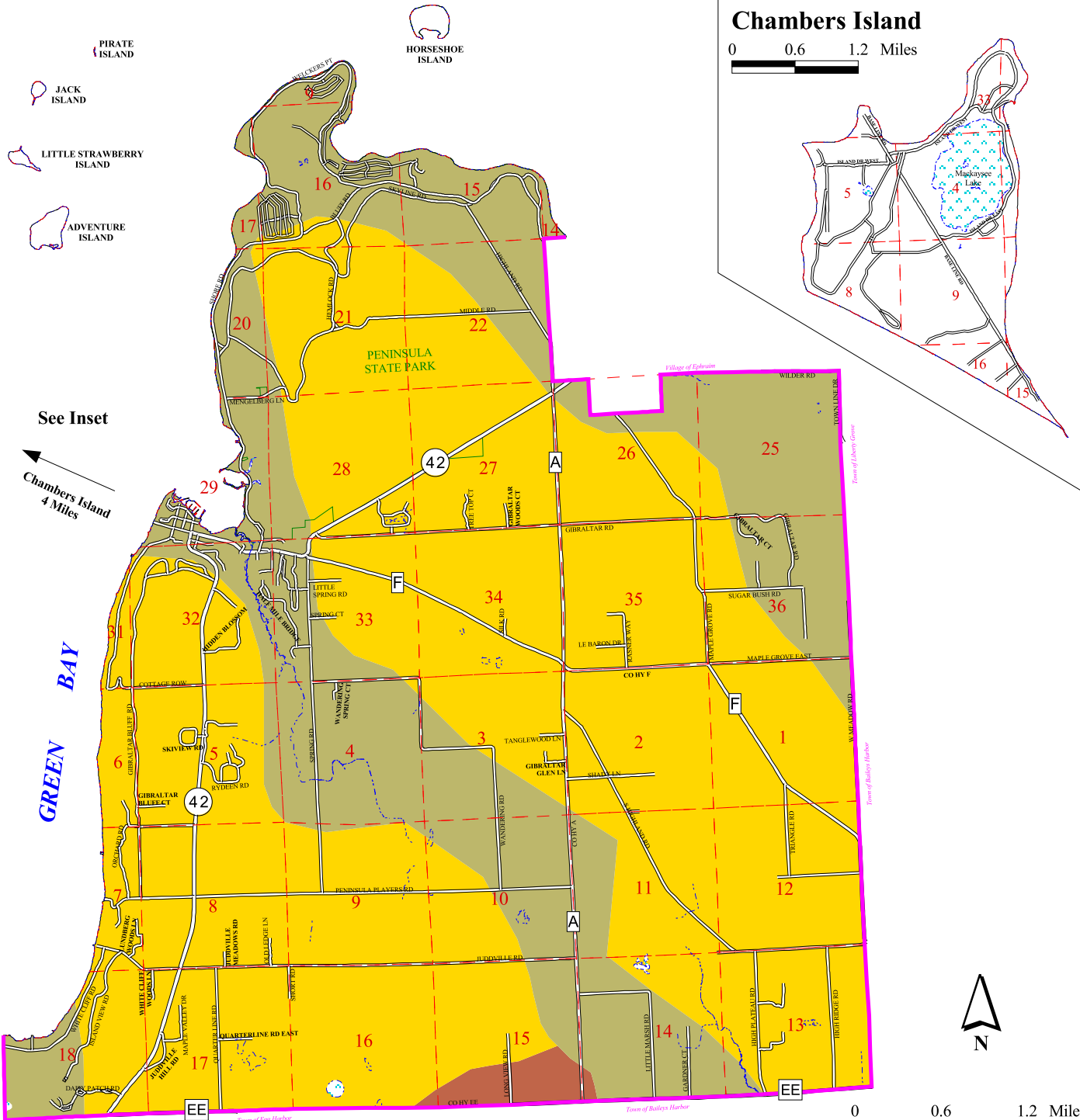
Map Features

-  State Highway
-  County Highway
-  Local Road

-  Lakes and Ponds
-  Surface Water Features
-  Section Lines
-  Town Boundary

This map is neither a legally recorded map nor a survey, and is not intended to be used as one. It is a compilation of records and information used for reference purposes only. Information may have changed since the printing of this map. Please contact Town of Gibraltar or County of Door for updates.

Source: Bay-Lake Regional Planning Commission, 2004



See Inset
Chambers Island
4 Miles

GREEN BAY

Town of Egg Harbor

Town of Egg Harbor

Town of Bailey Harbor

0 0.6 1.2 Miles