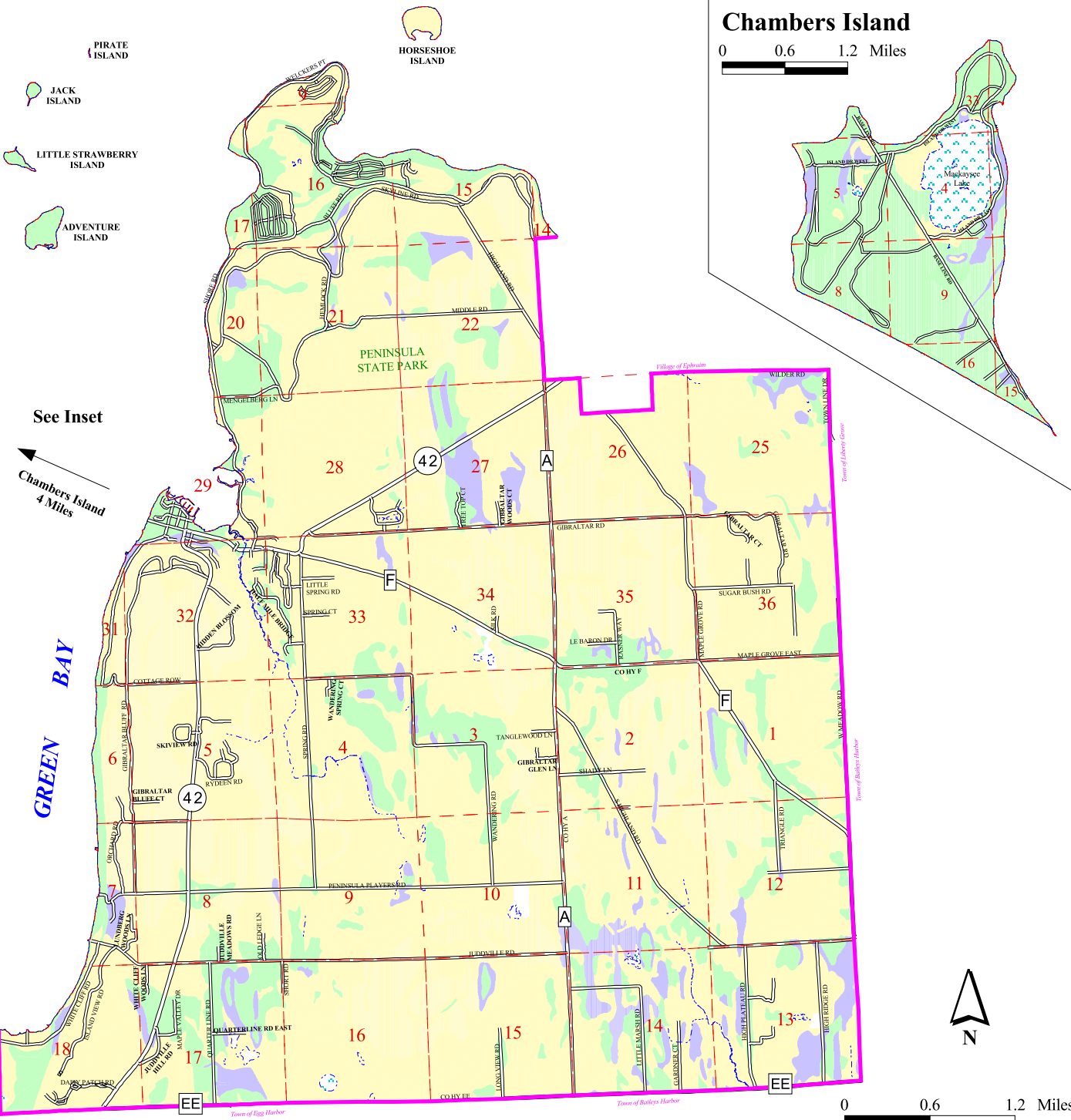


# Soil Limitations for Dwellings with Basements

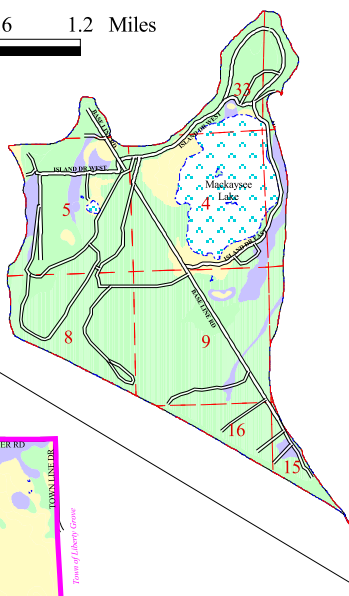
## Town of Gibraltar

Door County, Wisconsin  
December, 2015



### Chambers Island

0 0.6 1.2 Miles



- Slight Limitations
- Moderate Limitations
- Severe Limitations
- Not Applicable (Water/Quarry)

### Map Features

- 42 State Highway
- A County Highway
- A ST Local Road
- Lakes and Ponds
- Surface Water Features
- Section Lines
- Town Boundary

This map is neither a legally recorded map nor a survey, and is not intended to be used as one. It is a compilation of records and information used for reference purposes only. Information may have changed since the printing of this map. Please contact Town of Gibraltar or County of Door for updates.

Source: Door County Soil Survey, 1975

0 0.6 1.2 Miles



See Inset  
Chambers Island  
4 Miles